

MANIFOLD 1 (LEFT HAND)

BUILDERS HOLE:  
350mm (W) x 75mm (H)

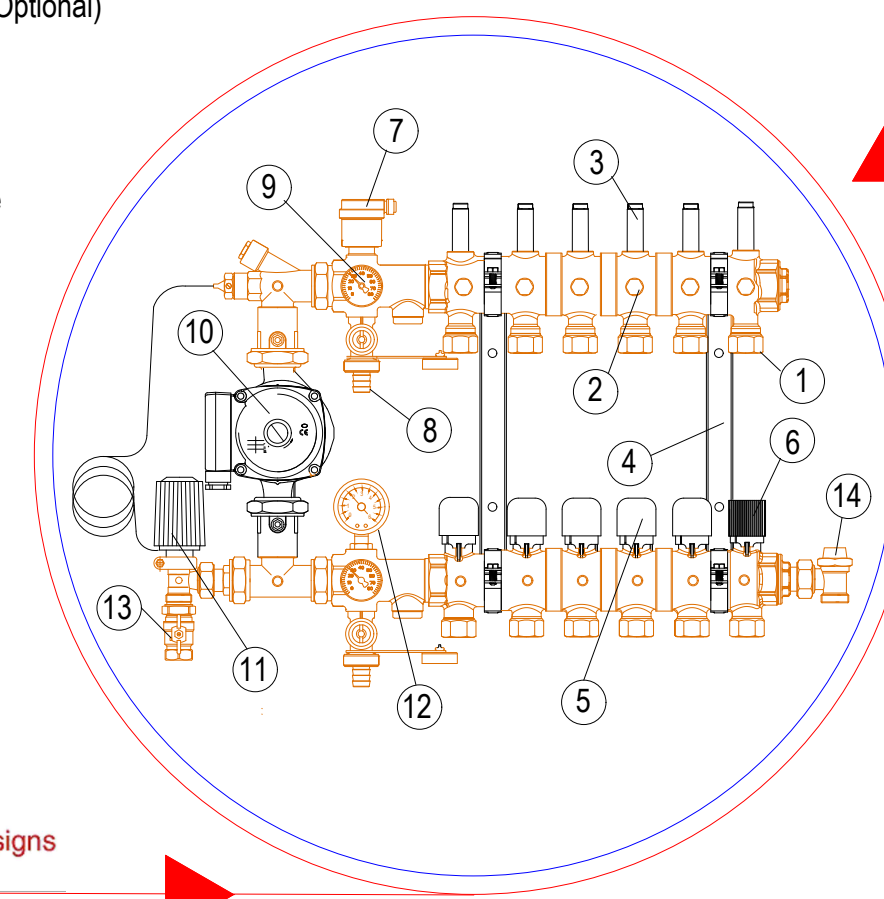
BUILDERS HOLE:  
300mm (W) x 75mm (H)

### PROPOSED MANIFOLD SET

MA-01

- 1 Pipe Connectors
- 2 Flow Rate Adjuster
- 3 Flow Indicator
- 4 Manifold Holding Bracket
- 5 Actuators 24/240v (Optional)
- 6 Manual Cap
- 7 Automatic Air Vent
- 8 Drain Fill/Cock
- 9 Temperature Guage
- 10 Blending Pump
- 11 Thermostatic Head
- 12 Pressure Guage
- 13 Isolating Valve
- 14 Isolating Regulation Valve

Typical Manifold with Blending Pump



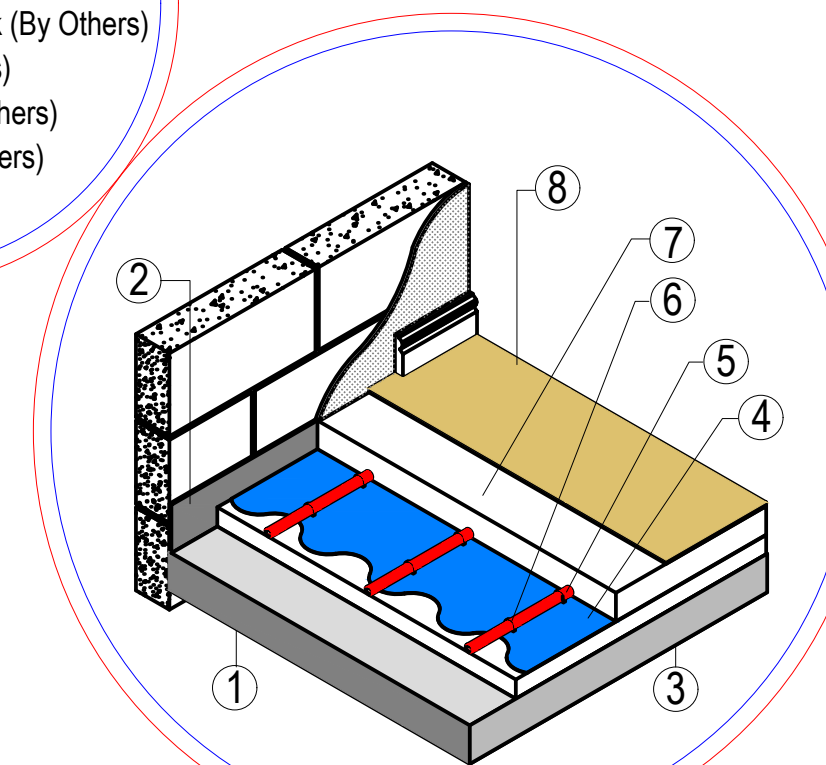
Underfloor Heating CAD Designs

### PROPOSED GROUND FLOOR BUILD UP

SA-01

- 1 Sub Floor (By Others)
- 2 Border Insulation (By Others)
- 3 Floor insulation (By Others)
- 4 Polythene Barrier (By Others)
- 5 Underfloor Pipework (By Others)
- 6 Pipe Clip (By Others)
- 7 Floor Screed (By Others)
- 8 Floor Finish (By Others)

Build-Up of Floor Tack Clipped to Insulation



Underfloor Heating CAD Designs

### Manifold 1

Circuit No.	1.1	1.2	1.3	1.4	1.5	1.6	1.7
Pipe Length(m)	92m	83m	98m	43m	90m	75m	95m
Pipe Spacing (mm)	200mm	200mm	200mm	200mm	200mm	200mm	200mm
Pipe Size (mm)	16mm	16mm	16mm	16mm	16mm	16mm	16mm
Thermostat	T	T	T	T	T	T	T

Manifold Flow Rate: 0.20 l/s @ 23 kPa

Flow Rate To Manifold: 0.09 l/s @ Min 5 - Max 30 kPa

- Notes to be Read - before Approval of Drawings**
- Controls Information**  
1: All Thermostats and Sensors positions shown on the drawing are to be checked by the client and Electrician at Approval stages, until then they will be positioned indicatively.
- Underfloor Heating**  
2: Underfloor Heating shall not be installed under any furniture i.e. cupboards, kitchen units, built in wardrobes unless its co-ordinated on site prior to installation.
- Floor Coverings**  
3: All Floor coverings and carpets must be suitable for use with Underfloor Heating, please check with provider before buying. Standard Carpets Underlay's should have a Tog rating 10r less.
- Screed Information**  
4: Screed is to be laid on the recommendation of the Screeder, no unwanted force such as Pedestrian crossing, access of large equipment or vehicles must not be used unless the screed has been covered and protected, to stop any damages occurring.
- Electrical Information**  
5: All conduits or floor boxes or any other electrical equipment in the floor should be highlighted on the drawings at Approval stages and co-ordinated on site prior to installation. All cables should be within conduit and not in direct contact with Insulation.
- Structural Requirements**  
6: The structural engineer must check that the floor section shown is suitable for the applied application and the dead loads shown on the floor.
- Underfloor Heating Drawing Information**  
7: The drawing shows underfloor heating being laid indicative and can change once its been co-ordinated on site and laid by a competent person, once laid the drawing will be updated to suit installation on As-Fit Drawings.



Underfloor Heating CAD Designs

### A APPROVAL

Rev	Amendment Details	Date
A	FOR APPROVAL -	05.03.20

PROJECT TITLE: Plot 1  
Black Lane, Dridlington

DESCRIPTION: PROPOSED UNDERFLOOR HEATING LAYOUT TO GROUND FLOOR

DRAWING No	No OF DRAWINGS	SCALE	PAPER SIZE	REVISION
C100-40	1 of 1	1:50	A1	A